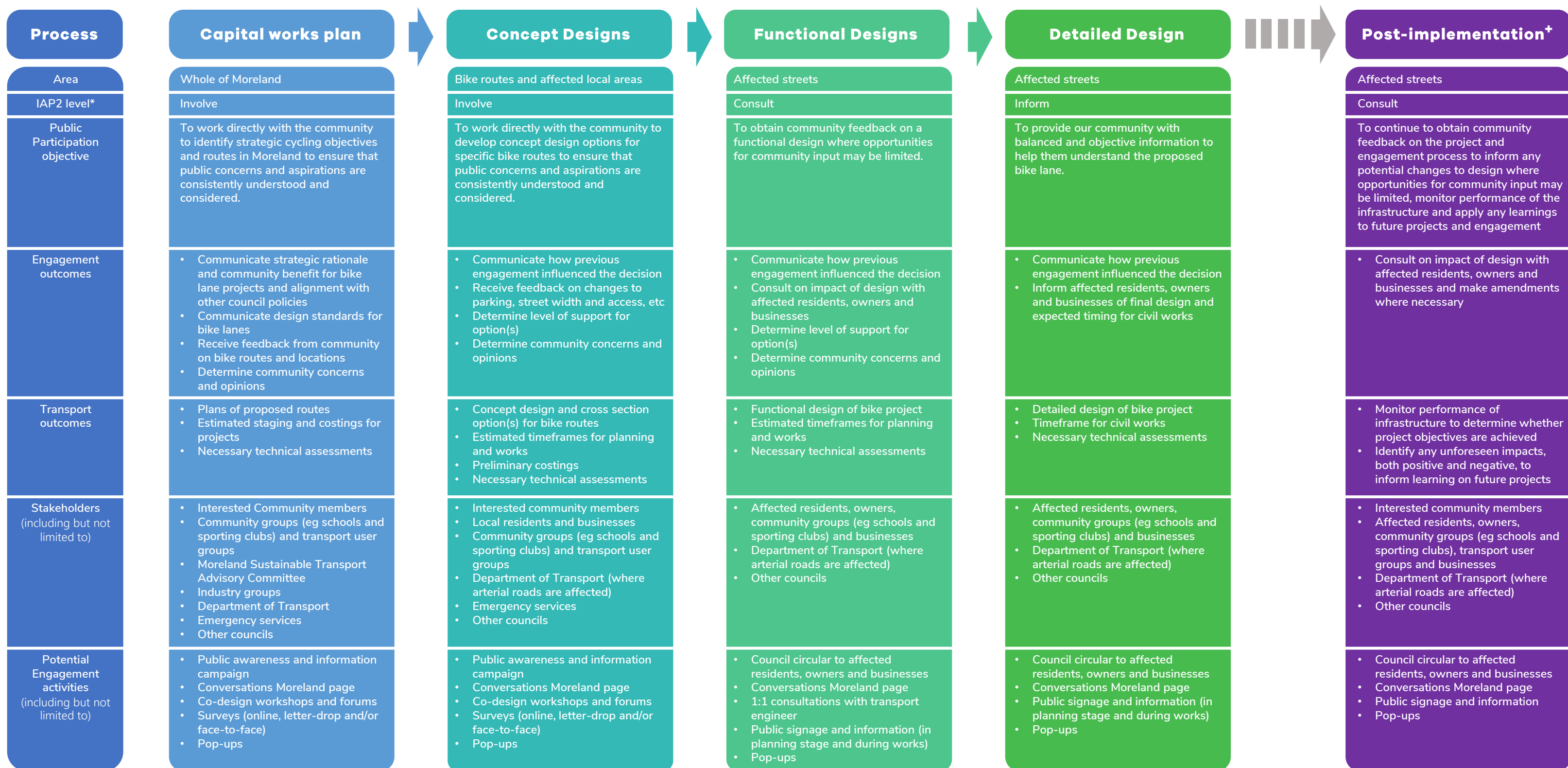


# Future bike lane projects engagement process

Adopted March 2022



\* Each bike project will require a different level, method and frequency of engagement depending on the likely impact to the community; the level of risk, and the extent to which the community is able to influence the final outcome or decision. Council will aim to deliver engagement for process stages at the IAP2 levels outlined above. If under any circumstances Council seeks to reduce or increase the level of engagement, we will explain the reasons for this, and provide evidence that includes regard to human rights.

+ Engagement post-implementation is an ongoing process and may occur at multiple times and levels subject to project type and level of interest.